

Table of Contents

Contents

TABLE OF CONTENTS	1
DISCLAIMER	2
PROCESS OVERVIEW	3
DOWNLOAD FREE MT4 PLATFORM	4
SET UP YOUR MT4 PLATFORM	7
SET YOUR EA SETTINGS	7
SET UP YOUR CHART	8
EXPERT ADVISOR INSTALLATION	9
STARTING THE EA TO TRADE	11
DEFAULT INPUT SETTINGS	11
RISK INPUT SETTINGS (POSITION SIZING)	12
<i>Lots</i>	12
<i>Risk %</i>	13
<i>5 digit Broker – True or False</i>	13
COMMON QUESTIONS	15
HOW DO I KNOW MY ROBOT IS INSTALLED?	15
HOW DO I KNOW THE ROBOT IS TRADING?	15
HOW DO I SEE THE HISTORICAL TRADES?	15
THE ROBOT IS NOT TAKING ANY TRADES	15
I TRY TO CHANGE THE INPUTS BUT THEY KEEP GOING BACK TO THE DEFAULT SETTINGS.	15

DISCLAIMER

U.S. Government Required Disclaimer - Commodity Futures Trading Commission
Futures and Options trading has large potential rewards, but also large potential risks. You must be aware of the risks and be willing to accept them in order to invest in the futures and options markets. Don't trade with money you can't afford to lose. This is neither a solicitation nor an offer to Buy/Sell futures or options. No representation is being made that any account will or is likely to achieve profits or losses similar to those discussed on this web site. The past performance of any trading system or methodology is not necessarily indicative of future results.

CFTC RULE 4.41 - HYPOTHETICAL OR SIMULATED PERFORMANCE RESULTS HAVE CERTAIN LIMITATIONS. UNLIKE AN ACTUAL PERFORMANCE RECORD, SIMULATED RESULTS DO NOT REPRESENT ACTUAL TRADING. ALSO, SINCE THE TRADES HAVE NOT BEEN EXECUTED, THE RESULTS MAY HAVE UNDER-OR-OVER COMPENSATED FOR THE IMPACT, IF ANY, OF CERTAIN MARKET FACTORS, SUCH AS LACK OF LIQUIDITY. SIMULATED TRADING PROGRAMS IN GENERAL ARE ALSO SUBJECT TO THE FACT THAT THEY ARE DESIGNED WITH THE BENEFIT OF HINDSIGHT. NO REPRESENTATION IS BEING MADE THAT ANY ACCOUNT WILL OR IS LIKELY TO ACHIEVE PROFIT OR LOSSES SIMILAR TO THOSE SHOWN.

No representation is being made that any account will or is likely to achieve profits or losses similar to those shown. In fact, there are frequently sharp differences between hypothetical performance results and the actual results subsequently achieved by any particular trading program. Hypothetical trading does not involve financial risk, and no hypothetical trading record can completely account for the impact of financial risk in actual trading.

All information on this website or any e-book purchased from this website is for educational purposes only and is not intended to provide financial advise. Any statements about profits or income, expressed or implied, does not represent a guarantee. Your actual trading may result in losses as no trading system is guaranteed. You accept full responsibilities for your actions, trades, profit or loss, and agree to hold ForexAIRobot and any authorized distributors of this information harmless in any and all ways. The use of this system constitutes acceptance of our user agreement.

Process Overview

☐ **STEP 1:**

Download a FREE MetaTrader4 (MT4) Broker Trading Platform.

☐ **STEP 2:**

Set Up your MT4 platform.

☐ **STEP 3:**

Install Your Expert Advisor (EA or Robot) into your MT4 platform.

☐ **STEP 4:**

Set Up your EA Inputs

Download FREE MT4 Platform

STEP 1:

There are 2 options available to every trader.

1. Use a free demo (practice) account.
2. Use a live account.

The free Demo and the Live account look identical – the difference is in the set up (the Live account requires proof of identification and funding of equity – the free Demo is 'pretend money').

Get your metatrader platform account (free) by clicking the link ahead:

<http://www.metatrader4.com/>

After the download is complete, please double click on the setup program (m4setup.exe) and you will get a screen like this:



Choose your language and follow the instructions to install MetaTrader4.

Select the program to launch after installation.

Launch MetaTrader platform after you finish the installation. You will be prompted to open a demo account.

Open an Account

Personal details
To open an account, please fill out all the following fields:

Name: min 6 chars

Country: State: min 2 chars

City: min 2 chars Zip code: min 3 chars

Address: min 6 chars

Phone: min 6 chars Email:

Account Type: Currency:

Leverage: Deposit:

☒ I agree to subscribe to your newsletters

< Back Next > Cancel

Fill out the form and follow the instruction to set up a demo account. Please remember to write down the login id, password and investor id. Keep it in a safe place.

Now that you have installed the MetaTrader4 program and opened a demo account. Please proceed to Step 2 to set up your MT4 platform correctly.

Set up your MT4 platform

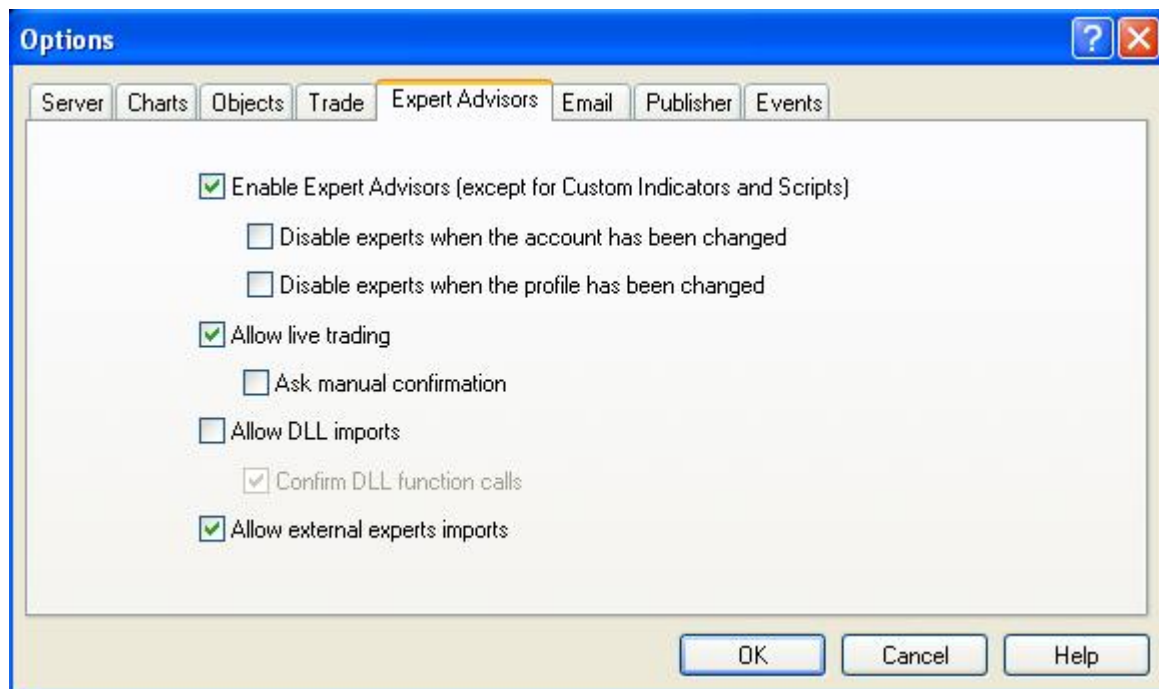
SET YOUR EA SETTINGS

On the menu bar, please choose TOOLS then OPTIONS.

On the menu bar, please choose Tools->Options. When the OPTION dialog pops up, click on the EXPERTS ADVISORS tab.

TICK "Enable Expert Advisor" and "Allow live trading".

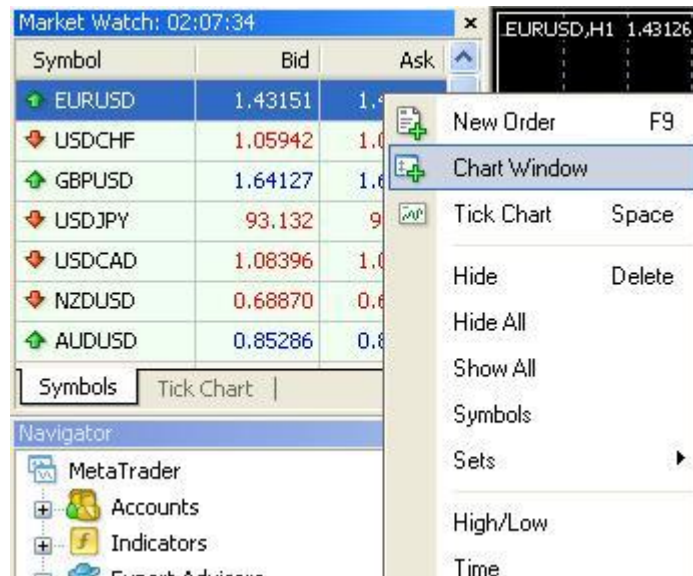
Then click OK to accept the change. See picture below.



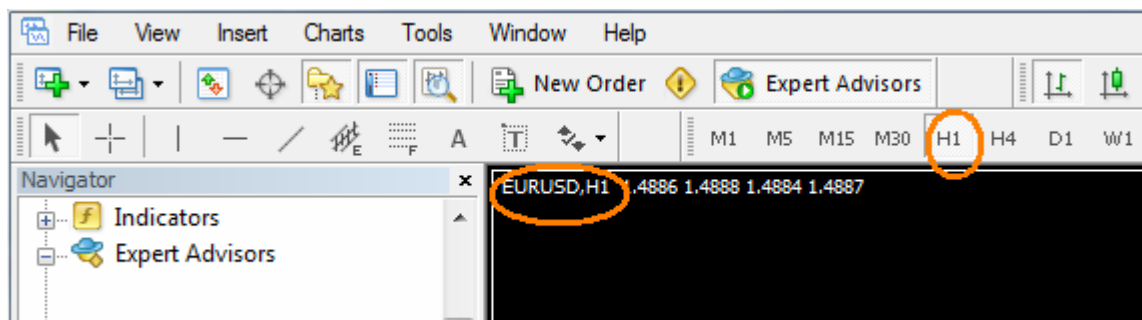
SET UP YOUR CHART

The AI Robot was optimized on the **EURUSD pair on the 1 Hour Chart**.

Right click on EURUSD from the MARKET WATCH window. When the menu pops up, choose "Chart Window".



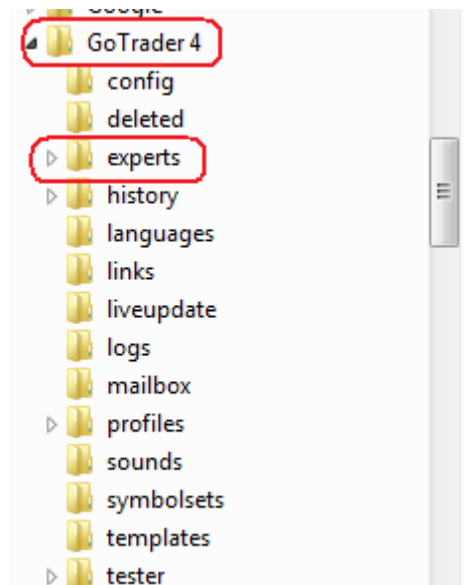
On the periodicity toolbar, click H1. Note that H1 stands for the 1 Hour Chart. Each bar in the chart represents 1 Hour. Notice I have circled the H1 button and also on the chart it will then reflect the EURUSD pair and the time frame H1.



NOW CLOSE YOUR MT4 platform.

Expert Advisor Installation

1. First ensure your MetaTrader4 Trading Platform is **CLOSED**.
2. Then find the location of your Expert Advisor (EA)... where you saved the Expert Advisor (.ex4 file) to your hard drive (*remember when you downloaded this manual, the EA and System Manual*). This can be found through My Computer (*also called Windows Explorer - found through your START then COMPUTER*).
3. When you locate the file hover your mouse above the .ex4 file.
4. Right click your mouse and a popup menu will give you a list of options.
5. Select COPY.
6. Then go through MY COMPUTER (Windows Explorer) and expand the C:DRIVE, then expand PROGRAM FILES, then find your MT4 Broker (eg; GoTrader4 etc) – expand that, then EXPERTS folder.
7. When you have found the EXPERTS folder RIGHT CLICK on that name and click PASTE and click through the prompts of your security questions should there be any.

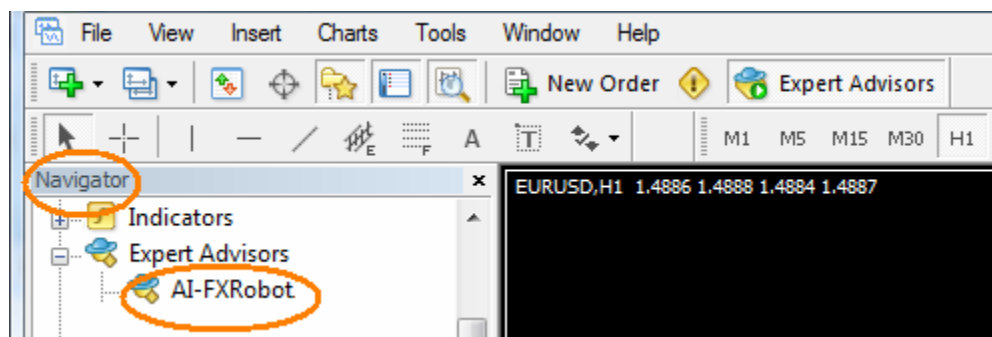


Then reopen your MT4 Broker Platform.

On the left hand side in the Navigator window, open the "Expert Advisors" folder.

If you see "AI-FXRobot" listed under the folder, as in the picture below, it means the EA is now installed.

Congratulations! Now you are ready to use the EA. Next we will look at starting to trade with the EA.



Starting the EA to Trade

In the Navigator window, double click "AI-FXRobot" under the "Expert Advisors" folder.

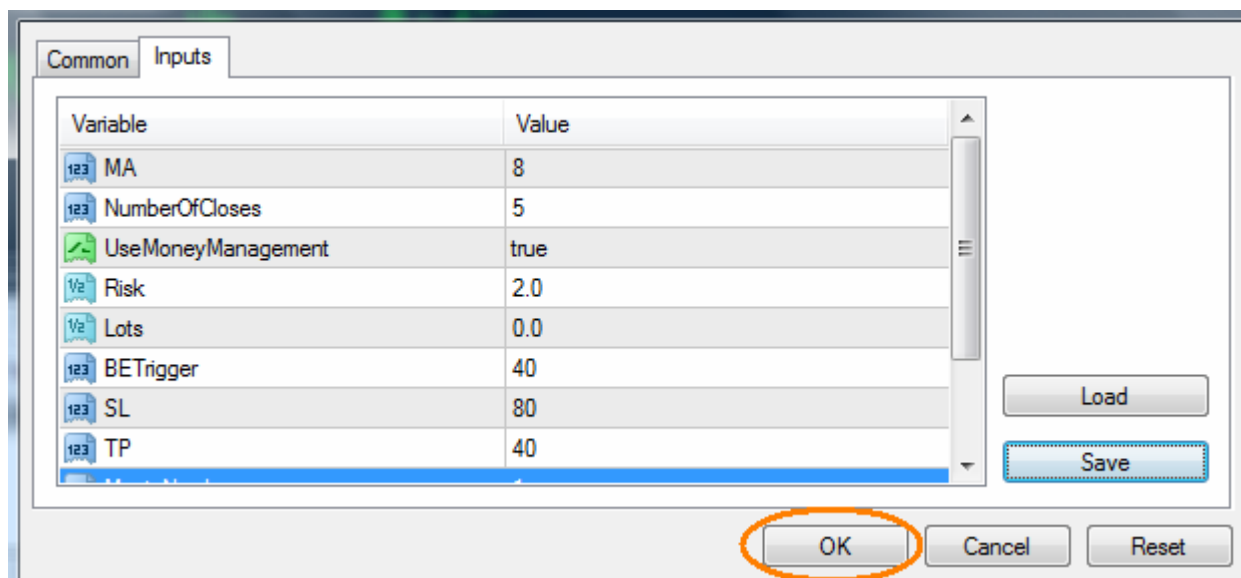
A pop up dialog box will appear called INPUTS.

Default INPUT Settings

The DEFAULT settings are what you see below. If you would like a full explanation of each of the Inputs please see the AI-FXRobot System Manual.

These default settings are the 'best' performing settings for the EA. So please leave all as they are except for the RISK setting.

RISK and/or Lot Settings: The important setting you need to consider changing is the risk input. Please now go to the next page to read your options for the risk settings.



Risk Input Settings (POSITION SIZING).

Risk management is the most important component to trading. And best to work on the basis of a worst case scenario.

In the AI-FXRobot there are two settings that can be used to determine the POSITION SIZING that the robot will take on each new trade.

1. standard LOTS 2. or RISK

Lots

If you want the robot to enter into an exact number of lots every time it trades you put a number in here. For example: **1** (Lot).

But for the Lot Input to work you need to change the RISK to Zero (0).

Let's assume you had a Micro Account where every 1 Lot meant you could lose or gain \$1 per pip movement.

The AI-FXRobot's default Stop Loss is at 80 pips. This means for every 1 Lot entered into within a Micro Account the maximum risk of the trade is \$80 (80 x \$1).

If your starting balance was \$2,000, then your \$80 dollar risk on your 1 Lot is a 4% risk of your starting balance (\$80 divided by \$2,000). This is a comfortable risk.

But what if you had 3 losing trades in a row, and each time you lost \$80, your loss would be \$240 in total leaving \$1,760. But your total risk on your account balance is increasing...

On your 4th trade your risk has increased to 4.5% (\$80 divided by the new balance of \$1,760). And would continue to do so if your balance decreased.

The best control is to use the 'Risk %' setting, see over page for explanation.

Risk %

The other selection is the RISK – the AI-FXRobot default is set on 5%.

This means that the robot will automatically calculate the appropriate number of Lots you can enter into according to the new account balance after each trade.

If your starting balance is \$2,000 and your risk is set at 5% this means that on each trade you do not want to risk more than \$100 on each trade. And as the Stop Loss is at 80 pips from the entry, if your Micro Accounts pip value was \$1 per pip movement, then your risk is \$80 per 1 lot.

The robot then calculates $\$100 \div \$80 = 1.2$ Lots it can enter into.

If your trade is profitable and you make a \$200 profit – on the next trade the robot automatically makes the same calculation but on the new \$2,200 balance.

This is the better setting as you know exactly how much of your account you are risking on each trade.

Turn the default figure down if 5% is too much.

You must have the MONEY MANAGEMENT setting on TRUE for this to override the Lots.

5 digit Broker – True or False

IMPORTANT – it is crucial that you have this True/False setting correct for your broker – otherwise the stop loss will enter as 800 pips rather than 80 pips!

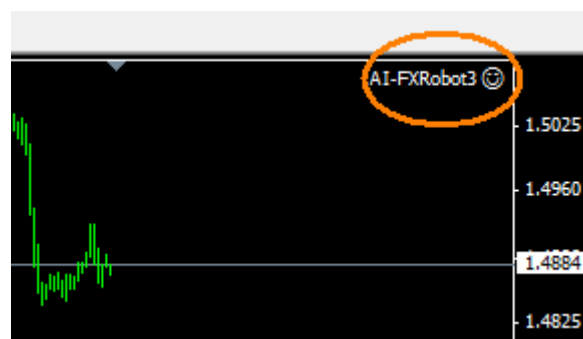
This broker in the image below is a 4 digit broker – see how there are 4 numbers after the decimal point. Ensure your setting is FALSE.

If this were a 5 digit broker the number would be 1.44650. If yours is a 5 digit this setting is TRUE.



Once you have adjusted the INPUT Settings click OK.

Now you should see the label "AI-FXRobot" with a smiley face on the top right hand corner of your chart. This confirms your robot is on and ready to start trading. See picture below. Our EA is now in action.



Common Questions

How do I know my robot is installed?

The robot is installed correctly and ready to trade if there is a smiley face on the top right hand corner of the chart.

How do I know the robot is trading?

When the robot takes a trade you will see an obvious green (entry) line or a red (stop loss) line across your chart, showing the price that it has entered the trade.

If you had 3 EURUSD charts open, each with a different robot and only 1 robot took a trade, you will see the horizontal entry lines across all 3 of the EURUSD charts... To find out which chart/robot the trade executed on you can distinguish it by a grey circle with an arrow in it pointing to the exact entry which that robot entered the trade.

You will see all OPEN trades in the TRADE tab within the TERMINAL window.

How do I see the Historical Trades?

Any closed trades are located in the ACCOUNT HISTORY tab in your terminal screen.

The robot is not taking any trades.

Please check one thing. On your menus across the top of your MT4 Broker platform please go to TOOLS, then OPTIONS, the EXPERT ADVISORS, and check you have the ALLOW LIVE TRADING ticked. And do the same within the inputs of each robot installed (on each time frame or pair) you will need to double click on the smiley face to change and save the INPUTS under there.

I try to change the Inputs but they keep going back to the default settings.

Make sure you are accessing the Inputs via the SMILEY FACE on each of your charts.